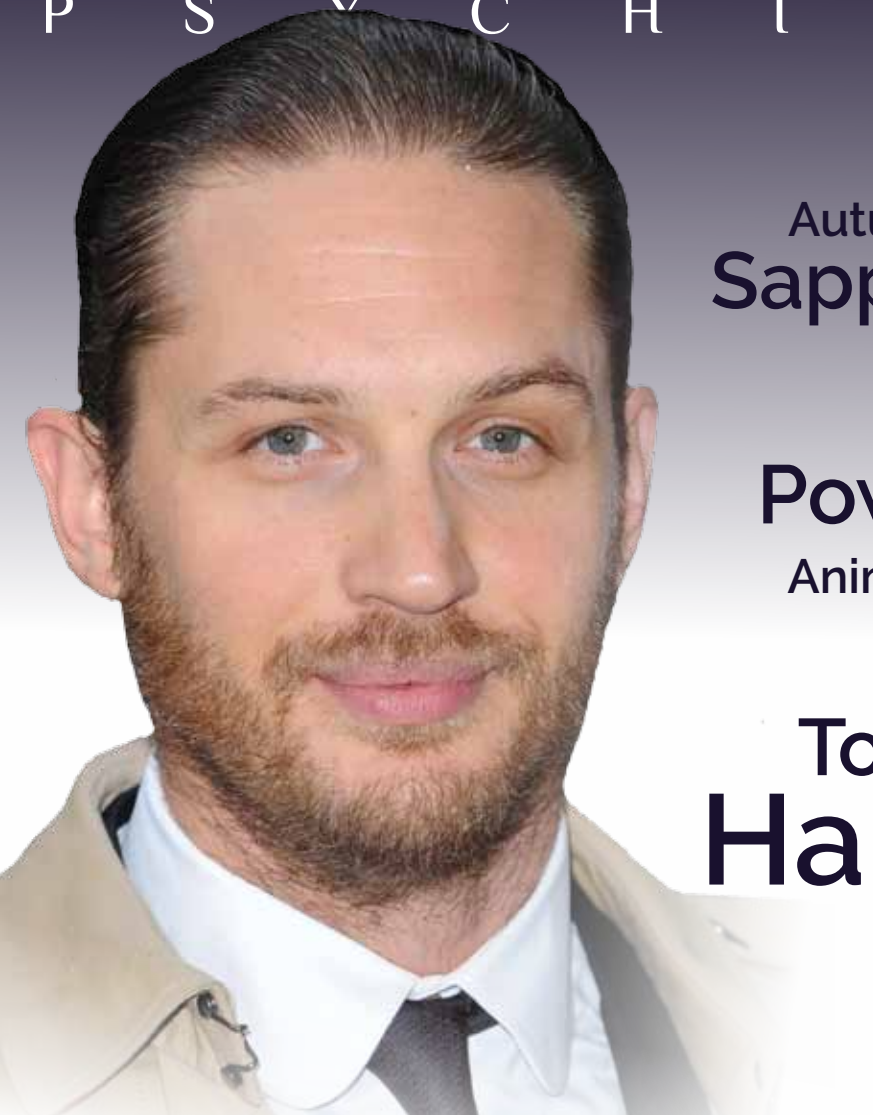


A better tomorrow starts today

September 2017

# Crystal Clear

P S Y C H I C S



Autumn  
Sapphire

Power  
Animals

Tom  
Hardy

**50% OFF YOUR NEXT PSYCHIC READING\***

- 0800 422 0422 credit cards | 0906 110 4334\* premium
- Latest stories and offers on **facebook**
- Visit us online at **crystalclearpsychics.co.uk**

Republic of Ireland  
1580 600 299 (premium)  
1800 805 078 (CC)



## FROM THE EDITOR

September is a magical month. As the sun moves through Virgo and transitions into Libra, the value of diligence and a meticulous approach to problem solving combines with the need and desire to help others. We truly live in a world of spiritual and psychic connections — and the more we realise this, the more inspiring life becomes.

Tom Hardy has truly come into his own as a performer, but it hasn't been easy. This Virgo passed through a very difficult period of life to emerge as a tested-and-true method actor. We take a look at his life and astrology in order to piece the puzzle together.

Psychic Chrissie has contributed two exciting articles this month. The first is on Power Animals. She takes a look at the ancient spiritual connection between people and animals, and how we can harness this connection in our daily lives today. Then she writes about the Sapphire, the stunning blue birthstone of September. This stone is prized not only for its physical beauty and monetary value, but also for its fascinating magical and protective properties.

We hope you enjoy our September issue, and thank you again for being a valued client!

Love and Light,

Lauren X



# Gwyneth

PIN 7735

## WHAT PSYCHIC TOOLS DO YOU USE?

I used tarot cards in the early days, but as my natural ability increased I no longer felt the need to use them — but I can if a client wishes me to. I enjoy working with Angel cards with angel guidance and messages. I also always have a pack of playing cards at hand. These help me with timings and dates. Did you know we all have a guardian angel only unique to us? There are angels all around us, and they love nothing more than to help — you just have to ask. The energy of these cards is gentle and pure. Along with the pictures, I visualise images and can feel the right and wrong path for the client.

## CAN YOU TELL US ONE REMARKABLE STORY FROM A RECENT CLIENT?

I have a regular client and am fortunate to get feedback that my predictions have come to pass. I spoke to a lady who was very worried about a job review with her boss. She felt she had not performed well in her work role, and was concerned that she was going to be dismissed. I reassured her she would not lose her job, but there were some things she needed to improve. I also told her I was seeing the number 9 and 4 around her. She called back and told me "you're good...I needed to improve on work deadlines, and I got a bonus of £949 what a result!"

## WHAT DO YOU LIKE ABOUT READING FOR CRYSTAL CLEAR PSYCHICS?

*I have worked for Crystal Clear Psychics for many years. Firstly, they are a great bunch of people and I have met many of them in person. They are always professional in their approach towards the clients. I like the "5-minute rule" that enables clients to restart their reading with another reader if they have not connected with their first. As a reader, I support this process.*

## WHEN DID YOU FIRST DISCOVER THAT YOU WERE PSYCHIC?

*I must say I have always felt I was psychic. My father nearly died as a child and saw a tunnel of light come down for him. He fought hard to stay and because of this, he could see and speak to spirits. Troubled souls he would send into this light. My mother was half native American Indian; she was spiritual and in touch with mother earth. As a child I grew up in Canada. I always felt I knew things before they happened and knew of changes to come. I had a protector a dog names chuck who was half wolf half husky. He was always at my side, we were spiritual connected.*

## WHAT ARE YOUR PSYCHIC TALENTS?

Firstly, I have a talent for connecting people. This starts as soon as a client starts to talk to me. I get strong inner feelings of what is going on in their life and situation. I can see their path ahead and I can guide them forward. Mediumship will sometimes come in, usually from a loved one with a message to help them. They continue to help us from the spirit world, in fact they are delighted to be able to help! Clairsentience is when I have a clear feeling or knowing. Sometimes I will see a picture that has a meaning to the client. This results in a feeling of trust and connection. Clairvoyance helps to see the future and guide clients toward a positive outcome.

# 50% OFF\*

your psychic reading with **any reader** this month!

Call 0800 422 0422 | Quote sep17

# Tom Hardy



♍  
蛇

If you were to make a list of actors with who project a soft image, Tom Hardy would probably not be on your list. His public persona is one of the edgiest in show business today, and the roles he chooses seem tailor-made to perpetuate an image of strength and in some cases recklessness.

And yet, Hardy's characters are anything but one dimensional. Even when he plays a villain in a big budget film — as he did in the final installment of Christopher Nolan's Dark Knight trilogy — his presence on-screen exudes complication and nuance. When we see his interviews and read about his life story, his own personality appears to be equally complex. So what's behind the meteoric rise of British actor Tom Hardy? What can his astrological signature — and his checkered past — tell us about his evolution as a human being? Where will his life and career take him next?

Edward Thomas Hardy was born on 15th September, 1977 in Hammersmith, London. That makes him a Virgo in the Chinese Year of the Snake — a fascinating combination that is written all over his life and characters. As the only child of artistic parents (his mother was a painter and his father a writer), Tom had early exposure to many different modalities of art, yet it was quickly apparent that he would follow his own path. Only a few particulars have been shared with the general public about his teenaged and early adult years, but we know that he fell deep into substance abuse and delinquent behavior at an early age. The Snake is considered to be reticent, intuitive and autonomous. It may have been that Hardy's interest in the arts was coupled with an impulse, subconscious or not, to 'live hard' before he embarked on his own artistic career.

Even during these years of hard living, Hardy fostered an ambition to act. He studied at both Richard Drama School and Drama Centre London, and worked hard on his craft. But he was still living dangerously, and as the story goes, he hit "rock bottom" in 2003.

When he made the decision to enter rehab and clean up his life at the age of 26, he wasn't starting from square one as an actor. He had already earned applause for his contributions to two big budget productions: The HBO-BBC series Band of Brothers and Ridley Scott's Black Hawk Down. That year also brought him a successful run of stage performances in London that earned praise from critics and further elevated his profile as a promising, edgy young actor.

Virgo is a meticulous and hard working sign — and despite the elements of Hardy's chart that may have contributed to reckless decision-making and personal exploration (including Neptune in Sagittarius in the 9th house, and the more destructive aspects of the Snake in Chinese astrology) — his Virgo nature would have kept the gears of discipline turning in the right direction. Having both sun and Mercury in 6th house Virgo makes Hardy a quintessential method actor who submerges deep into his characters — and refused to cut corners. When asked about his 2016 Academy Award nomination in the category of Best Supporting Actor for The Revenant, he answers by praising his co-stars (moon in Libra) and reiterating that he does not think about wards or accolades when he's working. Instead, he focuses all of this attention on the task at hand (Virgo).

Another things worth noting in terms of Tom Hardy's astrology is that all of his planets are located in the Western hemisphere or "right side" of his birth chart. This denotes an intense ability to identify with others, including the characters he portrays. It also explains why he is so well-liked in the industry.

There's no doubt that Hardy's checkered past gives him reserves of energy to succeed in edgy roles, but his astrological constitution sets up him for a long arc of success in a wide variety of characters. As he turns 40 this month, entering a more mature phase of life and career, the sky is truly the limit.

# September Horoscopes



Check out today's horoscopes at [crystalclearpsychics.co.uk/horoscopes.html](https://crystalclearpsychics.co.uk/horoscopes.html)



## Aries

This month is going to require a degree of subtlety in your approach. Although the planets are asking you to grapple with everyday practicalities and the detail of things, at times you may find your focus gets skewed by the demands of others, or from the occasional jab of self-doubt or even low energy. However, relationships are given a superb boost from the 23rd and 30th.



## Cancer

Communications are going to need quite a lot of care this month. In the first week it can be your finances that you're grappling with, but for the rest of the month what you mean to say, may not necessarily be how people receive the information. Your imagination can also be very vivid, but if you're exchanging facts and figures, it's going to be vital to be really precise in all you say.



## Taurus

Fact can be stranger than fiction this month, which for a practical person like you may sound a little daunting. Actually see this as an opportunity to think outside the box. Your creativity is going to be exceptionally high, as can your imagination. There's likely going to be opportunities in your love life as well, but in an existing relationship, do listen to your inner voice to guide you.



## Leo

If it's been a case of one step forwards and one step back, preceding the start of this month, it wouldn't be a surprise. Greater traction is possible from the end of the first week and you can be determined to improve your lot when it comes to your financial position. If you've been waiting for some money, the 19th can be a key date. Communications sparkle as the month ends Leo.



## Gemini

Mercury ends its retrograde on the 5th, and with Mars moving on the same day, you could find yourself busy around your immediate family or siblings. The Full Moon on the 6th however, can see you unsure about professional possibilities. This can almost feel like you may have too many options. Balancing home and professional life is going to be key to countering this.



## Virgo

You're given an awful lot of astrological tools to make progress this month and particularly between the 5th and the 12th, when the Sun in Virgo shares a brilliant angle to Pluto, the planet of transformation. But as much as you can feel fired up and purposeful, other people may not share your enthusiasm, and it's going to be how you deal with them that's key. Do stay single minded.



Free Chinese horoscopes! [www.crystalclearpsychics.co.uk/chinese-horoscope.html](http://www.crystalclearpsychics.co.uk/chinese-horoscope.html)



## Libra

You may find your efforts slightly conflicted this month due to a number of planets forging oppositions with the dreamy Neptune which is in your sector of sacrifice. It may feel that however much effort you put in, it's never enough to please some people. Yet your powers of diplomacy are not going to be dimmed, and if there is someone tricky you encounter, lay on the charm Libra.



## Capricorn

Although you are someone who takes everyday responsibilities very seriously, this can be a month when you really feel in the mood to break out and do something much more spontaneous. If you're travelling, it can prove to be a very vivid and uplifting experience. Some Goats may even consider a course of higher education. Details will though need carefully checking Capricorn.



## Scorpio

Your social situation is going to throw up a lot of rich possibilities this month, and this could see you meeting some new people or moving in fresh circles. Whether you make a new friend or are drawn to someone in a romantic context, perhaps the best way to approach this is on a step-by-step basis. In spite of this, there is a possibility that the reality of one person can fall short of your expectations.



## Aquarius

With Venus remaining in the most sensational part of your 'scope through to the 20th, this month continues to offer rich potential for improvements around your love life. The more passionate side of your personality can also be aroused. Keeping discipline around a strict diet or financial plan may though prove a little more challenging. You could feel much more liberated in the last week.



## Sagittarius

This can be a fabulous month for career, goals, promotions and key objectives. Your desire to gain greater recognition can prove to be successful, but it is going to be important to ensure that the people who provide your everyday support systems, feel very much part of what you're trying to achieve. If not, this could lead to you being less productive in the areas that you wish.



## Pisces

In the first four days of September, a practical matter could prove frustrating. But stick at it as progress can be made. But you need to be really engaged both emotionally and creatively to enjoy this month, and any lack of sensitivity in close relationships can make you think about whether to stick or twist. Despite this, by the 19th you may get the reassurances you have been seeking.

# What's your Power Animal?



Articles by psychic  
**Chrissie**



The spiritual link between humans and animals goes back to the beginning of recorded history — and probably long before that! As humans, we often see characteristics in animals that can easily be equated to our own behaviour, and can also tell us things about the world we live in. Animism, furthermore, is the phenomenon of ascribing souls to animals, plants, mountains, rivers, and other natural phenomena. In the American Indian culture from centuries ago, animals were revered, and tribes make icons of various animals by carving their likenesses into totem poles. In fact, we can look at virtually any indigenous culture in any area of the world and find shamanic practices and beliefs relating to animals and the special powers they embody.

In our present day and age, certain cultures still believe in a strong spiritual link between animals and humans. Film franchises such as *Twilight*, *Lord of the Rings* and many others demonstrate the popularity and persistence of animism, power animals, and shamanistic practices related to the animal world.

Specifically, there are two levels of belief connected to animals. The first is a belief in spirit animals, which effectively “choose” you. The second is power animals, which can be chosen by you.

This is why we sometimes get a strong feeling or ‘pull’ towards a particular type of animal. There are many web sites

that give general outlines on how to go about it, but it’s also possible to discover your power animal in everyday life. Take horoscopes, for example. Many astrological signs, of both the Western and Chinese variety, use animals as power symbols to describe certain types of people.

To find your power animal, try concentrating first on pictures in magazines, films which include animals, or even a trip to the zoo. See if you can feel a link to any animal you see in front of you. A powerful ‘pull’ towards one species in particular may indicate that this is the one for you!

So what are power animals actually good for? The physical form of the animal you choose to link to should give you an indication of what you can do when you spiritually ‘merge’ with the animal and absorb it’s powers. For instance, lions are cunning and know how stake out their prey. Their power and strength is enough to scare off opponents, and they are also fiercely loyal. Merging with a lion as your power animal will empower you with these traits.

If you don’t feel a pull toward any particular animal, look around you. Animal symbolism is all around you. Does that pattern on the wallpaper remind you of something? Is the title of the book you see in the background of a film leaping out at you with its title containing the name of an animal? To

properly get into this, you must open your eyes and your mind.

Try looking at friends and family member. Try to identify which power animal you feel they might be. Chances are, you will find it quite easy to work out. Once you know your power or spirit animals, and with practice, you’ll be able to absorb those animals traits and use them to drive your personal, spiritual and psychic growth!

**“We can look at virtually any indigenous culture in any area of the world and find shamanic practices and beliefs relating to animals and the special powers they embody.”**

Live  
psychic  
readings!

0800 422 0422



# AUTUMN SAPPHIRE

**S**apphire is the birthstone of September. Personality traits associated with this indicate the person is intelligent, clam and keeps things close to their chest. They are loving and loyal, with deep commitment and honesty, making them a worthwhile partner!

The sapphire belongs to the same family as the ruby. Both are comprised of aluminium oxide, with only the colour being the difference. They are both members of the mineral corundum family, and they rate 9/10 in terms of hardness (for reference, the diamond rates 10/10).

Because of its hardness, sapphire is ideal for jewellery such as rings and bracelets. The colour of the stones varies from light blue to yellow to pink — and many other hues! The darker shades of sapphire are the most expensive. They also vary according to where they are mined in the world. For example, specimens from Burma and Kashmir have the greatest depth of blue, while those from Sri Lanka are paler and less expensive.

The word sapphire is derived from the Latin *saphirus* and the Greek *sapheiros* — in both cases, the meaning is simply 'blue'. Some cultures also believe the name has an association with the planet Saturn.

Sapphire is a beautiful gemstone and has been highly prized for centuries, stretching back over many centuries. For the rulers of ancient Persia, the sky was painted blue thanks to the reflection of sapphire stones! Sapphire was also held in high regard by the Catholic Church, and it's sometimes claimed that the Ten Commandments were written on tablets of sapphire.

The supposed power of the stones showed itself in the fact that kings of the ancient world wore them around their necks, believing they would be protected from harm. Also, in the 12th century, ecclesiastical rings were bejewelled with sapphire in order to attract divine favour! The stone was highly valued as a deterrent against witchcraft, and travellers wore it to protect themselves from harm and stay safe on their journeys.

Sapphire has also been associated with chastity and piety, bringing truth and wisdom to the wearer. For many lovers it seems desirable to symbolise romance, love and fidelity with the giving and receiving of a sapphire engagement ring (a large sapphire featured in the engagement ring given to Princess Diana by Prince Charles, which was later passed on by Prince William to Kate Middleton).

Many myths surround the powers possessed by this incredible stone. Many of these powers are linked to protection from all sorts of threat. In ancient days, some wore sapphire in the belief they would ward off magical spells, and even protect against natural elements. During the 11th and 12th centuries, sorcerers used the stones to get in touch with astral and psychic realms. In certain parts of the Orient, Saturdays was seen as a day to dress in blue and to wear sapphire stones to attract good luck, bringing prosperity and health. People would even grind up sapphires and mix with milk to apply to boils and ulcers, along with making poultices to help with toothache.

Sapphire also has a link to spirit guides and angels. From a psychological point of view, sapphire helps clear the mind, bring focus, and generate a more positive attitude.

While holding a blue sapphire stone, try closing your eyes and clearing your mind. Next, focus on one of your problems and breath steadily as you visualise that problem getting smaller and smaller — until it looks insignificant. This mysterious power may be associated with colour, since blue is known to have a restful and calming effect on the mind. It's also been shown that merely concentrating on something blue can calm the nervous system — hence the popularity of painting bedrooms blue to induce restful sleep!

Given the millions of years that gemstones have been buried in the earth, it's not surprising that they're loaded with the powerful energies — and that wearing them allows us to tune in to some of that power. So wear your sapphire with confidence and pride!



# Crystal Clear Psychics

CREDIT CARDS

**0800 422 0422**

PREMIUM\*

**0906 110 4334**

\*£1.50 per minute

INTERNATIONAL

**+44 207 111 6000**

TEXT MESSAGE\*

**SALLY + question  
to 78887**

\*Text message costs £1.53 per message.

To end, text STOP to 78887

ONLINE

**crystalclearpsychics.co.uk**

**Allan**  
7794

**Amber**  
5500

**Amethyst**  
7790

**Andrea**  
7726

**Andrew**  
7824

**Athena**  
7748

**Benedicte**  
5511

**Bernie**  
7811

**Danielle**  
7823

**Ellie**  
7837

**Eric**  
7742

**Gail**  
7804

**Gill**  
7796

**Greta**  
7832

**Gwyneth**  
7735

**Janette**  
7711

**Jean**  
7842

**Jeannie**  
5506

**Jennifer**  
7782

**Jessica**  
7777

**Jo**  
7745

**Joanne**  
7746

**Karena**  
7703

**Lily**  
7725

**Linda**  
7845

**Loraine**  
7776

**Manda**  
7801

**Megan**  
7840

**Melody**  
7809

**Pam**  
7821

**Priscilla**  
7717

**Rachel**  
7722

**Ruth**  
7783

**Sam**  
7713

**Sam Anne**  
7807

**Sapphire**  
7724

**Selina**  
7727

**Sharon**  
7849

**Shireen**  
7825

**Shyama**  
7762

**Stevie**  
7718

**Tammy**  
7848

**Tayo**  
5501

**Tito**  
7819

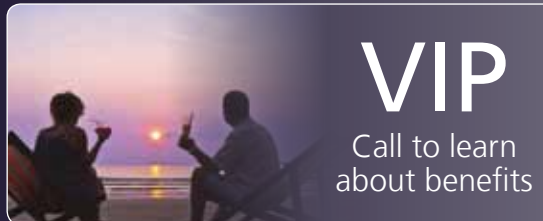
## SEEKING NEW READERS

Do you have a real psychic gift? We pride ourselves on the quality of our readers.

Please apply to:  
[lauren@crystalclearpsychics.com](mailto:lauren@crystalclearpsychics.com)

**50% off your next psychic reading\***

Call 0800 422 0422 • quote sep17



# VIP

Call to learn  
about benefits

Live 24 hours on premium rate. Age 18+. For entertainment purposes only. All calls are recorded. £1.50/min on BT landlines. Roi 1 580-600-298. Roi €2.44/min. Texts £1.53/message (received replies span 2 messages); to end send STOP. Promotional messages may be sent. Calls charged at £1.50 per minute, plus your phone provider's access charge. You must be over 18 and have the bill payers permission, this service is provided by CCP. Customer Services 0800 422 0422. \*Half price reading offer not valid with any other offer. Minimum call duration 20 minutes. Credit cards only. Offer expiry date 30 September, 2017. Promotional offer requires customers to opt in to future email marketing campaign. Our receptionists will ask for your email address prior to making this offer. You can always opt out in the future.